



Fresno Chamber of Commerce presents

# Highlights of Scandinavia

11 Days

July 17, 2025

Booking #184094 (Web Code)

**BOOKING  
DISCOUNT!**

Save \$200 Per Person  
\$400 Per Couple\*

**NO RISK DEPOSIT  
NO CHANGE FEES**

*Book Now and your Deposit is Risk Free with  
No Change Fees until Final Payment Due Date!  
See back for details\*\**



**TOUR RATES:**

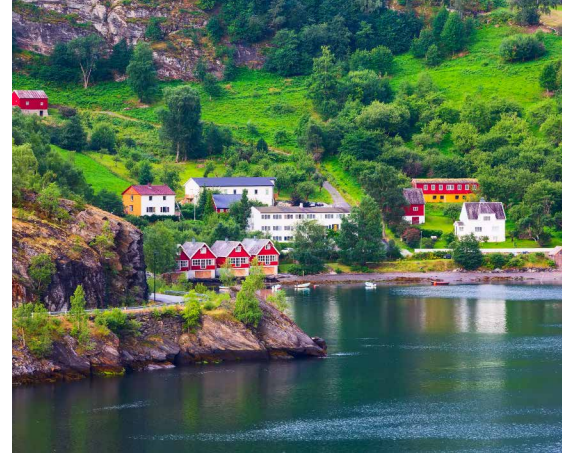
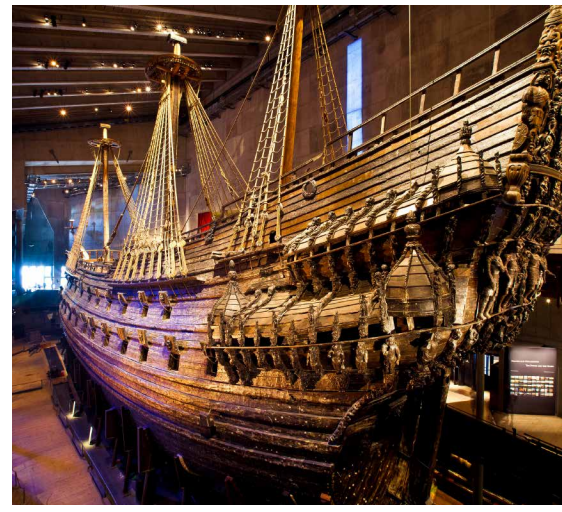
Booking Discount\*: **\$7399** pp double

Regular Rate: **\$7599** pp double

Single Supplement: +\$1550

\*See Reservation Info for Booking Discount details





# Highlights of Scandinavia

## DAY 1: DEPART USA

Board your overnight flight to Europe.

## DAY 2: ARRIVE STOCKHOLM, SWEDEN

Welcome to Scandinavia. Enjoy the beauty and colorful history of Scandinavia as you explore capital cities, experience breathtaking train journeys and marvel at dramatic landscapes & waterways. Arrive in Stockholm, meet your Tour Director and transfer to your hotel for a two-night stay. Stockholm, Sweden's beautiful capital city stretches across 14 islands between Lake Malar and the Baltic. Tonight join your fellow travelers for a **Welcome Dinner**.

⊗ (D) Overnight: **Stockholm, Sweden**

## DAY 3: STOCKHOLM SIGHTSEEING

This morning meet your local guide for a **Stockholm City Tour** featuring the famous City Hall, historic Old Town, the Royal Palace and the Stock Exchange. Continue to the Southern Island for a splendid view of the city and the harbor. Visit the **Vasa Ship Museum**. Built in 1628, the Vasa is the largest battleship of its kind and sank when launched. After 333 years at the bottom of the sea it was raised in 1961. The remainder of the day is at leisure to enjoy this spectacular city often referred to as "Venice of the North" for its exquisite architecture and abundant open water.

⊗ (B) Overnight: **Stockholm, Sweden**

## DAY 4: STOCKHOLM – OSLO, NORWAY

Enjoy the changing landscapes as you motorcoach from Sweden into Norway, famous

for white mountains, breathtaking fjords, emerald-green forests, outdoor adventure and its capital city, Oslo. Late afternoon, arrive in Oslo and see its urban cityscapes, towering mountains, and impressive architecture. Check in for a two-night stay and enjoy a bit of leisure time before dinner.

⊗ (B,D) Overnight: **Oslo, Norway**

## DAY 5: OSLO SIGHTSEEING

Today enjoy your **Oslo City Tour** with your local guide. Drive past the medieval Akershus Fortress, the 19th century Royal Palace, the National Theatre and the modern City Hall. Stop to visit the **Vigeland Sculpture Park**, designed by Gustav Vigeland, and showcasing over 200 sculptures. Visit the impressive **Norwegian Folk Museum**, boasting cultural history and extensive collections of artifacts from all regions of Norway. Then visit the **Fram Museum**, highlighting two ships used in 19th & 20th century polar expeditions. Explore the Open Air Museum to see the **Gol Stave Church**, a full-size replica of the original Church built around 1250. The remainder of the day is free to experience Oslo at your own pace. Stroll the shopping streets, linger at a café, and sample some of Norway's great seafood.

⊗ (B) Overnight: **Oslo, Norway**

## DAY 6: TRAIN OSLO TO MYRDAL – FLAM RAILWAY - FJORD CRUISE

This morning transfer to the Oslo train station to board the **Vy Train**. The scenic 4-hour rail

experience is one of the best ways to view the wonders of Scandinavia as you train from Oslo to Myrdal, traversing breathtaking countryside. Arrive in Myrdal, a remote mountain station located 3,000 feet above sea level and famous for its remarkable views. In Myrdal board the spectacular **Flåm Railway**, described as one of the most beautiful train journeys in the world and one of Norway's leading attractions. The train runs from the high mountains down to Flam at the end of Aurlands Fjord, a tributary of the Sognefjord. In Flam board your **Aurlands Fjord Cruise** and enjoy the dramatic scenery from the water as you travel to Gudvangen. Then join your motorcoach for a short ride to your hotel for an overnight stay. Dinner is included this evening at the hotel.

⊗ (B,D) Overnight: **Stalheim or Myrkdalen**

## DAY 7: STALHEIM AREA – BERGEN

Today head towards Bergen in Western Norway. Enroute visit a **Norwegian Sheep Farm** to learn about farming traditions and enjoy a local Beer & Snack Tasting. Norway is home to over 2 million sheep. Continue to Norway's second-largest city, Bergen for a two-night stay. Bergen is a UNESCO World Heritage city, which proudly preserves its rich past with timbered 15th-century houses, centuries-old warehouses built by seagoing merchants, and charming cobblestone streets. Enjoy dinner in Bergen this evening.

⊗ (B,D) Overnight: **Bergen, Norway**

## DAY 8: BERGEN SIGHTSEEING

After breakfast join a local guide for a **Bergen City Tour** featuring King Hakon's Hall, the bustling fish market, St. Mary's Church and Bryggen Quarter, a UNESCO World Heritage site. Later





visit **Troldhaugen**, the former home and estate of one of Norway's beloved sons, composer Edvard Grieg. Later take the **Mount Floyen Cable Car** for a breathtaking view of this seafaring town. The rest of the day is free in this old Hanseatic city which offers a fascinating mix of history, culture and natural beauty.

✕ (B) Overnight: **Bergen, Norway**

**DAY 9: BERGEN – FLIGHT TO COPENHAGEN – TIVOLI GARDENS**

Transfer to the Bergen Airport for a short flight to Copenhagen for a two-night stay. Denmark's capital city is known as one of the most livable cities in the world with its lively streets, squares, canals and friendly people. Visit and stroll through the famous **Tivoli Gardens**, opened in 1843. This fun for all ages venue is one of Europe's most visited theme parks featuring an assortment of restaurants, theaters, garden experiences and an aquarium. Walt Disney was inspired by Tivoli Gardens and visited several times before opening Disneyland in 1955.

✕ (B) Overnight: **Copenhagen, Denmark**

**DAY 10: COPENHAGEN SIGHTSEEING**

This morning join a local guide for a **Copenhagen City Tour**. Travel through the heart of the city to see the Royal Amalienborg Palace, the Carlsberg Glyptotek, the colorful 17th century harbor district of Nyhavn and the Little Mermaid Statue, a 1913 sculpture honoring Hans Christian Andersen's famous fictional character. The afternoon is free to explore Copenhagen on your own. Maybe join an optional North Zealand Tour to explore the Danish Riviera. Pass ancient fishing villages and visit the 17th century Frederiksborg Castle. Tonight, enjoy a **Farewell**

**Dinner** with your fellow travelers at local restaurant in Copenhagen.

✕ (B,D) Overnight: **Copenhagen, Denmark**

**DAY 11: FLY HOME**

Transfer to the Copenhagen Airport and fly home filled wonderful memories of your experiences in Scandinavia.

✕ (B)

**TOUR ACTIVITY LEVEL**

Easy **1 2 3 4** Active



**TRAVEL AND SAVE!**

The Premier Compass Club rewards our valued guests with special recognition and a Compass Club Loyalty Credit on future tours and cruises.

Guests that have completed a trip will automatically be enrolled and will receive an additional \$100 per person or \$200 per couple Compass Club Loyalty Credit applied to their next Premier World Discovery tour or River Cruise. Loyalty Credit is valid for 24 months from your last tour.

For more details and information visit [premierworlddiscovery.com](http://premierworlddiscovery.com)

**TOUR HIGHLIGHTS**

- ▶ Stockholm City Tour
- ▶ Vasa Ship Museum
- ▶ Oslo City Tour
- ▶ Norwegian Folk Museum
- ▶ Fram Ship Museum
- ▶ Gol Stave Church
- ▶ Vy Train from Oslo
- ▶ Flam Railway
- ▶ Aurlands Fjord Cruise
- ▶ Sheep Farm with Local Beer & Snack Tasting
- ▶ Bergen City Tour
- ▶ Mount Floyen Cable Car
- ▶ Troldhaugen
- ▶ Copenhagen City Tour
- ▶ Tivoli Gardens

**INCLUSIONS**

- ▶ Roundtrip Airfare - FAT
- ▶ Int'l Air Departure Taxes/Fuel
- ▶ Inner Tour Flight – Bergen to Copenhagen
- ▶ 14 Meals: 9-Breakfasts & 5-Dinners
- ▶ Professional Tour Director
- ▶ Motorcoach Transportation
- ▶ Admissions per Itinerary
- ▶ Sightseeing per Itinerary
- ▶ Baggage Handling at Hotels

**ACCOMMODATIONS**

- ▶ 9 Nights Accommodations
- ▶ 2 - Hotel C, Scandic Anglairs or Elite Adlon, Stockholm, Sweden
- ▶ 2 - Thin Bristol, Oslo, Norway
- ▶ 1 – Stalheim Hotel or Myrkdalen Hotel, Norway
- ▶ 2 - Bergen Bors, Bergen, Norway
- ▶ 2 - Scandic Spectrum or Imperial Hotel, Copenhagen, Denmark

On some dates alternative hotels may be used



**TOUR RATES:**

Booking Discount\*: **\$7399** pp double

Regular Rate: **\$7599** pp double

Single Supplement: +\$1550

\*See Reservation Info for Booking Discount details



<b>RESERVATION FORM (INTL)</b> <b>Highlights of Scandinavia</b> <b>July 17, 2025</b> <b>Booking #184094 (Web Code)</b>	<b>Contact Information/Mail Reservation Form to:</b> <b>Fresno Chamber of Commerce</b> <b>2331 Fresno Street • Fresno, CA 93721</b> <b>559.495.4800</b> <b>https://res.chamberexplorations.com</b> <b>(877) 807-2249</b>
---	---

Make checks payable to: **Chamber Explorations**

Enclosed please find a deposit in the amount of \$ \_\_\_\_\_ (\$600 per person) to secure reservations for \_\_\_\_\_ # of people.

Travel Protection Plan (TPP): ☐ Yes, I (we) wish to purchase travel protection (TPP)  
*(TPP must be purchased with initial deposit)* ☐ No, I (we) decline travel protection (TPP)

Enclosed please find payment in the amount of \$ \_\_\_\_\_ (\$499 per person) to secure the Premier's Travel Protection Plan (TPP).

**TOTAL PAYMENT \$** \_\_\_\_\_

**GATEWAY AIRPORT** \_\_\_\_\_ **ROOMMATE'S GATEWAY AIRPORT** \_\_\_\_\_  
*see flyer for included group gateway airport/departure city, additional charges apply for other airport packages*

To avoid change fees, submit Passport names (first/mid/last) **exactly as they appear on Passports**

**Passport Name:** \_\_\_\_\_

DOB (MM/DD/YY) \_\_\_\_\_ Gender ☐ M ☐ F

Passport #: \_\_\_\_\_ Exp Date (MM/DD/YY) \_\_\_\_\_

Country of Issuance \_\_\_\_\_

**Roommate's Passport Name:** \_\_\_\_\_

DOB (MM/DD/YY) \_\_\_\_\_ Gender ☐ M ☐ F

Roommate's Passport #: \_\_\_\_\_ Exp Date (MM/DD/YY) \_\_\_\_\_

Country of Issuance \_\_\_\_\_

Street Address \_\_\_\_\_ ☐ Check if Roommate's address is the same

City \_\_\_\_\_ State \_\_\_\_\_ ZIP \_\_\_\_\_

Email address \_\_\_\_\_

MobilePhone# \_\_\_\_\_

Emergency Contact/Tel# \_\_\_\_\_

Notes or TSA/KTN #: \_\_\_\_\_



Cardholder Name (If paying by credit card) \_\_\_\_\_

Credit Card # \_\_\_\_\_ Exp Date: \_\_\_\_\_

CVV# \_\_\_\_\_ Amount to be charged \$ \_\_\_\_\_

Credit Card Billing Address: ☐ Check if address is the same as above

Address \_\_\_\_\_ City \_\_\_\_\_

State \_\_\_\_\_ ZIP \_\_\_\_\_ Tel# \_\_\_\_\_

Sign \_\_\_\_\_ Date \_\_\_\_\_

**SIGNATURE REQUIRED** (for credit card use & acceptance of terms\*)

*\*I (We) agree to pay according to the credit card issuer agreement. I understand and accept the cancellation fees/policy and other terms.*

#### DEPOSIT & FINAL PAYMENT

Deposit of \$600 per person is due with Reservation Form to secure reservations. **Reservations are taken on a first come, first served basis.** Final Payment Due Date is 90 days prior to departure.

#### \*BOOKING DISCOUNT

Make your Final Payment by check prior to the Final Payment Due Date & receive **\$400 per couple/\$200 per person Booking Discount!**

- Initial Deposit can be made by check or credit card to be eligible.
- Payments after Initial Deposit are considered part of Final Payment & must be made by check.

#### ONLINE BOOKING OPTION

Save time, postage & secure your seat for this group departure. Simply type <https://res.chamberexplorations.com> into your web browser & use the Booking Number (Web Code) from this flyer to make your Deposit online in just a few minutes. No need to submit a Reservation Form if booking online.

#### TRAVEL PROTECTION PLAN (TPP) \$499 per person

(must purchase with Initial Deposit)

##### Part A – Cancellation Waiver provided by CE

I. Trip Cancellation Waiver (TCW) - Guarantees full refund on all payments, except the Trip Cancellation Waiver Fee itself in case of cancellation up to the time and date of departure due to the passenger's personal illness or death of an immediate family member. Medical/official documentation required.

II. Premier "Any Reason" Cancellation Waiver (ARCW) - Reimburses 75% of the cancellation fees in the form of a future travel credit certificate (FTCC) valid for 1 year, if you cancel more than 48 hours prior to scheduled departure for any reason not eligible for cash refund under the TCW (Part A – I.). FTCC is non-transferable, may not be redeemed for cash and does not include any credit for the Trip Cancellation Waiver Fee. **The Trip Cancellation Waiver Fee must be paid for with Initial Deposit and is refundable until 180 days prior to departure.** The Trip Cancellation Waiver does not cover any single supplement charges due to an individual's traveling companion canceling prior to departure. The Trip Cancellation Waiver is non-transferable and valid for each applicant only. The Trip Cancellation Waiver does not cover any services such as airline tickets not purchased through PWD. Cancellations, Refunds & Inquiries under Part A will be handled by PWD. Certain Exclusions and Restrictions apply.

##### Part B – Post Departure Travel Protection Plan\* provided by USI

Includes coverage for: Trip Interruption (\$1,000); Trip Delay (\$100/Day-Max \$500); Baggage & Personal Effects (\$2,000); Baggage Delay (\$500); Emergency Accident/Sickness Medical Expense - excess coverage (\$30,000); Emergency Evacuation/Repatriation (\$150,000); Accidental Death & Dismemberment (\$25,000); Non-Insurance and Emergency Travel Assistance Services\*\* (24/7). Claims & Inquiries under Part B will be administered by USI.

For full Part A and Part B plan details visit: [premierworlddiscovery.com/TPP](http://premierworlddiscovery.com/TPP)  
 All Benefits described on this page are for general information basis only. There are certain restrictions, exclusions and limitation that apply to all insurance coverages. Plan benefits, limits and provisions may vary by state jurisdiction.

#### \*\*NO RISK DEPOSIT - NO CHANGE FEES

Deposits & TPP payments for any Bookings made for this tour are fully refundable until 180 days prior to departure. Should your plans change inside of 180 days you can use the full value (Future Travel Credit\*\*) of your Deposit or TPP on a different program as long as you change plans or let us know prior to the Final Payment Due Date.

\*\*FTC's are valid for 12 mos from dep date & non-transferable.

#### CANCELLATION FEES\*\*

Cancellations not covered by the Travel Protection Plan (TPP) or if the TPP is not purchased, are subject to the following per person fees:

	Full Refund
- Cancel more than 180 days prior to departure:	Deposit or TPP* is Retained**
- Cancel 179-90 days prior to departure:	25% of total price
- Cancel 89-60 days prior to departure:	50% of total price
- Cancel 59-30 days prior to departure:	75% of total price
- Cancel 29-15 days prior to departure:	No refunds
- Cancel 14 days or less prior to departure/no shows:	No refunds
*If purchased **Future Travel Credit issued for Deposit or TPP* value	

#### RESPONSIBILITY

Premier World Tours LLC dba Chamber Explorations (hereafter CE), whose vouchers are used by respective agents for the passenger in all matters pertaining to hotel accommodations, sightseeing tours and transportation, hold themselves free of responsibility for any damages occasioned from any cause whatsoever. CE will not be responsible for any damages or inconvenience caused by late arrivals, departures and change of schedule or other conditions nor will they be responsible for any act, omission, or event during the time the passenger is not on board their conveyance. The passage contract in use by the airline concerned, when issued, shall constitute the sole contract between the airline and the purchaser of this tour/cruise, and/or passenger. CE does not hold any responsibility for the conduct of any of its members, hotel, motorcoach, cruise line, train, airline or other personnel. CE reserves the right to decline to accept or retain any person as a member of a tour/cruise at its discretion. CE &/or its Tour Director retain the right to require any participant to withdraw from a tour/cruise at any time, if determined to be in the best interests of health, safety & general welfare of the tour/cruise group or of the individual participant. Arbitration - I/We agree, any and all disputes concerning this contract or any other material concerning the trip, or the trip itself must be resolved exclusively pursuant to binding arbitration in the state of California, pursuant to the then current rules of the American Arbitration Association. Payment of the deposit for this tour/cruise constitutes acceptance of these terms and conditions. CST #2048841-40

#### IMPORTANT CONDITIONS/NOTES

A valid US passport is required for this tour and is the responsibility of each passenger. Passports should be valid for up to six (6) months beyond the travel dates. All names must be submitted to Premier exactly as they appear on passenger passports.

Itinerary and hotels are subject to change.

#### AIR NOTE

Air Schedules may not be available until Final Trip Documentation is received. Air seats are assigned by the airline and sometimes not assigned until the day of travel. Air seat changes can only be attempted upon receipt of e-tickets and Final Trip Documentation at which time availability may be limited. If specific seat assignments or airline choice is extremely important to your reservation, we recommend you book land only and make your own air reservations. Please make this adjustment to land only/own air at time of tour reservation.

